

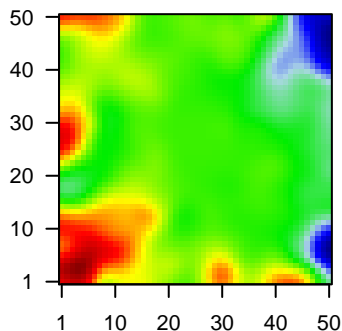
# MPI-196

## Global Summary

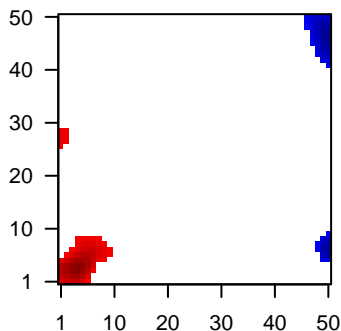
%DE = 0.05  
 # genes with fdr < 0.2 = 784 ( 429 + / 355 - )  
 # genes with fdr < 0.1 = 497 ( 284 + / 213 - )  
 # genes with fdr < 0.05 = 424 ( 244 + / 180 - )  
 # genes with fdr < 0.01 = 272 ( 156 + / 116 - )  
 # genes in genesets = 13152

<FC> = 0  
 <t-score> = 0.02  
 <p-value> = 0.24  
 <fdr> = 0.95

Portrait



Regulated Metagenes



## Global Genelist

Rank	ID	log(FC)	fdr	p-value	Description
1	39318_at	-1.81	2e-16	2e-13	46 x 49 T cell leukemia/lymphoma 1A [Source:HGNC Symbol;Acc:HGNC:10000]
2	201909_at	-1.8	2e-16	2e-13	43 x 49 ribosomal protein S4, Y-linked 1 [Source:HGNC Symbol;Acc:HGNC:10000]
3	202953_at	-1.4	2e-16	2e-13	0 x 0 complement C1q B chain [Source:HGNC Symbol;Acc:HGNC:10000]
4	203795_s_at	-1.87	2e-16	2e-13	42 x 49 BCL tumor suppressor 7A [Source:HGNC Symbol;Acc:HGNC:10000]
5	203819_s_at	-1.9	2e-16	2e-13	49 x 45 insulin like growth factor 2 mRNA binding protein 3 [Source:HGNC Symbol;Acc:HGNC:10000]
6	203820_s_at	-1.64	2e-16	2e-13	43 x 40 insulin like growth factor 2 mRNA binding protein 3 [Source:HGNC Symbol;Acc:HGNC:10000]
7	203915_at	-1.52	2e-16	2e-13	0 x 0 C-X-C motif chemokine ligand 9 [Source:HGNC Symbol;Acc:HGNC:10000]
8	205780_at	-1.54	2e-16	2e-13	40 x 49 BCL2 interacting killer [Source:HGNC Symbol;Acc:HGNC:10000]
9	205801_s_at	-1.67	2e-16	2e-13	0 x 7 RAS guanyl releasing protein 3 [Source:HGNC Symbol;Acc:HGNC:10000]
10	209728_at	2.16	2e-16	2e-13	0 x 10 major histocompatibility complex, class II, DR beta 4 [Source:HGNC Symbol;Acc:HGNC:10000]
11	209995_s_at	-2.32	2e-16	2e-13	46 x 49 T cell leukemia/lymphoma 1A [Source:HGNC Symbol;Acc:HGNC:10000]
12	210448_s_at	-1.97	2e-16	2e-13	0 x 18 purinergic receptor P2X 5 [Source:HGNC Symbol;Acc:HGNC:10000]
13	210763_x_at	2.4	2e-16	2e-13	29 x 0 natural cytotoxicity triggering receptor 3 [Source:HGNC Symt:10000]
14	211583_x_at	3.03	2e-16	2e-13	20 x 3 natural cytotoxicity triggering receptor 3 [Source:HGNC Symt:10000]
15	211634_x_at	2.28	2e-16	2e-13	10 x 5 immunoglobulin heavy variable 1-69 [Source:HGNC Symbol;Acc:HGNC:10000]
16	213831_at	-1.46	2e-16	2e-13	49 x 16 major histocompatibility complex, class II, DQ alpha 1 [Source:HGNC Symbol;Acc:HGNC:10000]
17	215379_x_at	-1.02	2e-16	2e-13	41 x 42 immunoglobulin lambda constant 2 [Source:HGNC Symbol;Acc:HGNC:10000]
18	219463_at	2.33	2e-16	2e-13	29 x 1 lysosomal associated membrane protein family member 5 [Source:HGNC Symbol;Acc:HGNC:10000]
19	219564_at	2.44	2e-16	2e-13	39 x 22 potassium voltage-gated channel subfamily J member 16 [Source:HGNC Symbol;Acc:HGNC:10000]
20	221234_s_at	-1.62	2e-16	2e-13	45 x 49 BTB domain and CNC homolog 2 [Source:HGNC Symbol;Acc:HGNC:10000]

## Global Geneset Analysis

Rank	GSZ	p-value	#all	Geneset
<i>Overexpressed</i>				
1	11.64	NULL	447	Glioma ScoV_0.999_Sturm_E4_Mesenchymal_RTK1_PDGFR4_DN
2	9.61	NULL	269	Glioma ScoV_0.5_Sturm_C3_Mesenchymal_DN
3	9.35	NULL	317	Cancer SPANG_BCL6-index2
4	8.78	NULL	297	GSEA C2GOLDRATH_ANTIGEN_RESPONSE
5	8.58	NULL	589	Colon Cancerbckc_TCGA-expr_kmeans_E_CIMP.H_UP_Cluster4_DN
6	8.56	NULL	352	GSEA C2MULLIGHAN_MLL_SIGNATURE_1_UP
7	8.07	NULL	902	GSEA C2CHEN_METABOLIC_SYNDROM_NETWORK
8	7.96	NULL	335	GSEA C2SCHUETZ_BREAST_CANCER_DUCTAL_INVASIVE_UP
9	7.83	NULL	231	Glioma WILLSCHER_GBM_Verhaak-CL & MES_up
10	7.61	NULL	386	GSEA C2MULLIGHAN_MLL_SIGNATURE_2_UP
11	7.44	NULL	432	Chromatinases peripheral blood_3_TxFlnk
12	7.3	NULL	229	GSEA C2O_PLASMACYTOMA_UP
13	7.27	NULL	235	GSEA C2NIKOLSKY_BREAST_CANCER_17Q21_Q25_AMPLICON
14	7.09	NULL	236	GSEA C2I_INDUCED_T_TO_NATURAL_KILLER_UP
15	7.03	NULL	255	GSEA C2HELLER_SILENCED_BY_METHYLATION_UP
16	6.8	NULL	382	Chr Chr 15
17	6.77	NULL	107	MelanomaTirosh_Exhaustion program in Mel75
18	6.63	NULL	219	GSEA C2MCLACHLAN_DENTAL_CARIES_DN
19	6.56	NULL	431	BP immune system process
20	6.5	NULL	403	BP neutrophil degranulation
<i>Underexpressed</i>				
1	-8.05	NULL	22	LymphomaBAVE_NFKB BL DN
2	-7.29	NULL	9	GSEA C2RUNNE_GENDER_EFFECT_UP
3	-7.2	NULL	12	GSEA C2SHIN_B_CELL_LYMPHOMA_CLUSTER_1
4	-6.97	NULL	852	MF nucleic acid binding
5	-6.67	NULL	14	BP positive regulation of calcium-mediated signaling
6	-6.51	NULL	1655	BP transcription, DNA-templated
7	-6.4	NULL	275	GSEA C2HADDAD_B_LYMPHOCYTE_PROGENITOR
8	-6.37	NULL	1541	MF DNA binding
9	-6.02	NULL	110	BP translational initiation
10	-5.98	NULL	21	GSEA C2PYEON_CANCER_HEAD_AND_NECK_VS_CERVICAL_DN
11	-5.84	NULL	133	GSEA C2FENG_LEUCINE_DEPRIVATION_UP
12	-5.6	NULL	1161	MF RNA binding
13	-5.5	NULL	1764	BP regulation of transcription, DNA-templated
14	-5.46	NULL	35	GSEA C2SHAFFER_IRF4_MULTIPLE_MYELOMA_PROGRAM
15	-5.44	NULL	18	LymphomaWRIGHT_ABC UP
16	-5.4	NULL	5456	ChromatinStateNeuronal_Progenitor
17	-5.33	NULL	105	ReferenceSubstanzel_2_4_Ribosomal proteins
18	-5.29	NULL	110	GSEA C2REACTOME_TRANSLATION
19	-5.27	NULL	387	GSEA C2JIAO_METASTASIS
20	-5.26	NULL	4579	CC nucleus

p-values

